

# Hospital and Facility Evacuation Systems

The DMS-05719 Hospital Evacuation Kit and the DMS-05721 Facility Evacuation Kit (for extended care and retirement residences) were designed to facilitate an efficient evacuation system through the use of door stickers utilizing colored check-box prioritization in consideration of patients' mobility. Patients with highest mobility would be categorized as first evacuees, Red, while patients with the least mobility would be categorized Green.



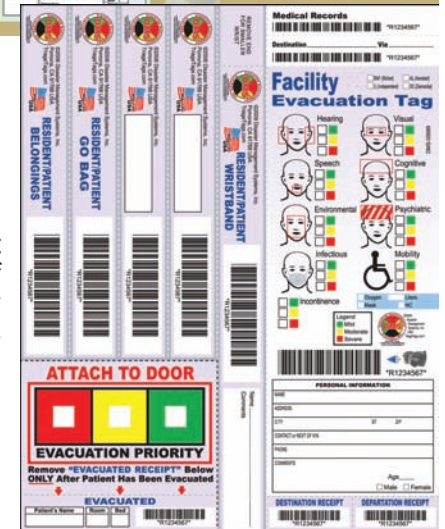
**DMS-05719**  
Hospital Evacuation Kit

The DMS-05719 Hospital Evacuation Kit includes 2 packs of DMS-05688 Hospital Evacuation Tags (25 tags per pack)



**DMS-05721**  
Facility Evacuation Kit

The DMS-05721 Facility Evacuation Kit includes 2 packs of DMS-05689 Facility Evacuation Tags (25 tags per pack)



## Both kits include the following:

### Departation Kit

- 1 - DMS-05714 Departation Logout Portfolio Cover
- 2 - DMS-05710 Pads of 25, 17 X 11.5 Synthetic Durawrite™ Waterproof Departation Logout Sheets
- 1 - DMS-05712 Packs of 50 - 4 X 10 Adhesive Backed "Evacuated Receipt" Sleeves
- 1 - DMS-05508 Packs of 50 - 3.5 X 10 Adhesive Backed "Destination Receipt" Sleeves
- 1 - DMS-05507 Packs of 50 - 2 X 10 Adhesive Backed "Category" Sleeves

plus either 2 - DMS-05688 Packs of 25 Hospital Evacuation Tags or  
2 - DMS-05689 Packs of 25 Facility Evacuation Tags

### Destination Kit

- 1 - DMS-05716 Destination Login Portfolio Cover
- 2 - DMS-05711 Pads of 25, 8.5 X 11.5 Synthetic Durawrite™ Waterproof Destination Login Sheets
- 1 - DMS-05507 Packs of 50 - 2 X 10 Adhesive Backed "Category" Sleeves



## Disaster Management Systems

Distributed by Cardiac Life  
(585) 267-7775  
349 West Commercial Street  
East Rochester, NY 14445

